

PRODUCT INFORMATION PACKET

Model No: 145TTWD16036

Catalog No: N471A

2 HP Washdown Motor, 3 phase, 1800 RPM, 230/460 V, 145TC Frame, TEFC
Washdown Duty Motors



Nameplate Specifications

Output HP	2 Hp	Output KW	1.5 kW
Frequency	60 Hz	Voltage	230/460 V
Current	5.8/2.9 A	Speed	1745 rpm
Service Factor	1.15	Phase	3
Efficiency	86.5 %	Power Factor	75.6
Duty	Continuous	Insulation Class	F
Design Code	B	KVA Code	L
Frame	145TC	Enclosure	Totally Enclosed Fan Cooled
Thermal Protection	No	Ambient Temperature	40 °C
Drive End Bearing Size	6205	Opp Drive End Bearing Size	6205
UL	Recognized	CSA	Y
CE	Y	IP Code	56

Technical Specifications

Electrical Type	Squirrel Cage Inverter Rated	Starting Method	Line Or Inverter
Poles	4	Rotation	Reversible
Resistance Main	6 Ohms	Mounting	Round
Motor Orientation	Horizontal	Drive End Bearing	Ball
Opp Drive End Bearing	Ball	Frame Material	Stainless Steel
Shaft Type	T	Overall Length	13.25 in
Frame Length	8.25 in	Shaft Diameter	0.875 in
Shaft Extension	2.12 in	Assembly/Box Mounting	F1/F2 CAPABLE
Outline Drawing	028940-825	Connection Drawing	005010.01

This is an uncontrolled document once printed or downloaded and is subject to change without notice. Date Created:14/10/2020

4

3

2

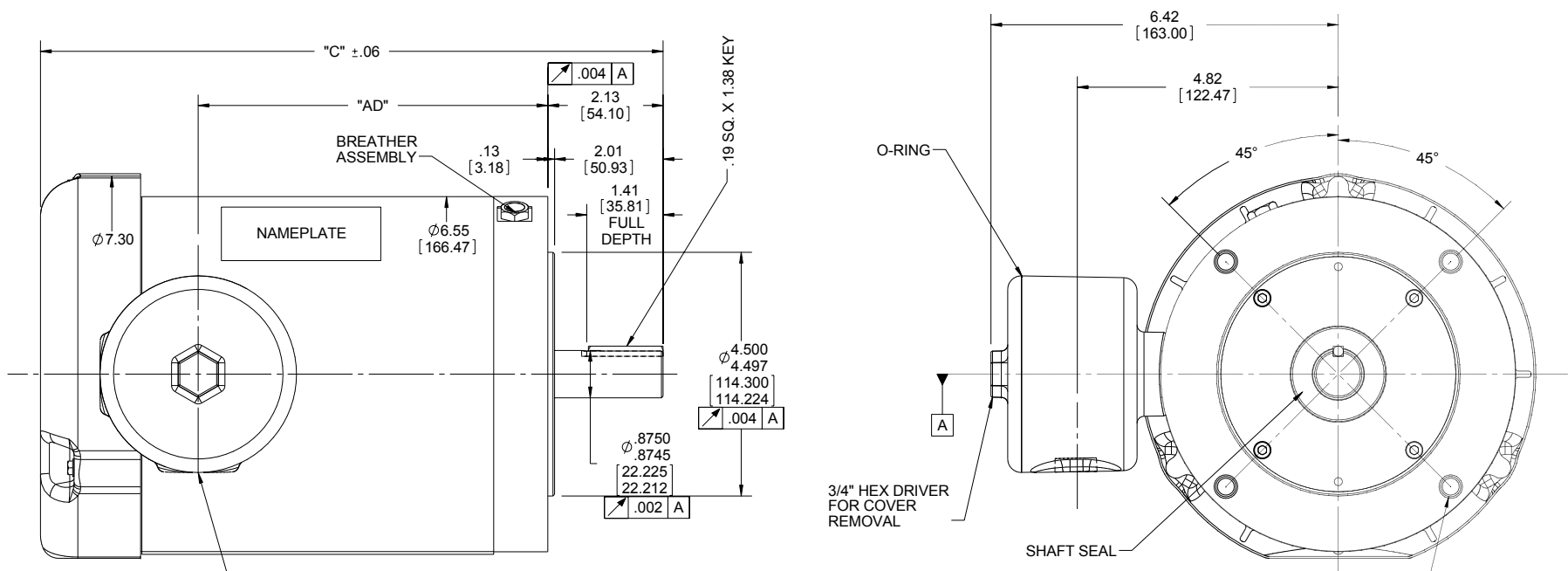
1

B

B

A

A



1/2-14 NPT
CONDUIT HOLE

DASH NO.	"C"	"AD"
525	10.25	5.21
550	10.50	5.46
575	10.75	5.71
600	11.00	5.96
625	11.25	6.21
650	11.50	6.46
675	11.75	6.71
700	12.00	6.96
750	12.50	7.46
775	12.75	7.71
800	13.00	7.96
825	13.25	8.21

(4) 3/8-16 UNC-2B X .56 DEEP
ON A Ø5.875 B.C.

DRAWING REVISION G		REVISION BY CHRIS FISHER	DATE 1/5/2015	TOLERANCES UNLESS OTHERWISE SPECIFIED:		DRAWN BY LST 1/9/09		Regal Beloit America, Inc.	
ECO ECO-0090909		APPROVED BY	DATE	DEC.	INCH	mm	ANGLE		
ECO DESCRIPTION ADDED ITEMS #800 & #825				REMOVE BURRS & BREAK SHARP	.X	±0.1	[+2.5]	±0.5°	APPROVED BY
COPYRIGHT REGAL BELOIT AMERICA, INC. ALL RIGHTS RESERVED. PROPRIETARY AND CONFIDENTIAL INFORMATION - THIS DOCUMENT IS THE PROPERTY OF REGAL BELOIT AMERICA, INC. ("OWNER") AND CONTAINS OWNER'S PROPRIETARY INFORMATION. ANY PERSON, CORPORATION OR OTHER FIRM RECEIVING IT IS DEEMED, BY RECEIVING IT, TO AGREE THAT IT, AND/OR ANY PART OF IT, SHALL NOT BE DISCLOSED TO ANY PERSON, CORPORATION OR OTHER ENTITY, DUPLICATED, AND/OR USED, EXCEPT AS EXPRESSLY APPROVED IN WRITING IN ADVANCE BY OWNER. THIS DOCUMENT SHALL BE RETURNED TO OWNER UPON REQUEST. IT MAY BE SUBJECT TO CERTAIN RESTRICTIONS UNDER APPLICABLE EXPORT CONTROL LAWS AND REGULATIONS.				EDGES: .003/.015 [076/381] X 45°	.XX	±0.01	[+0.25]	DATE	DESCRIPTION OUTLINE TEFC "C" FACE
				CORNER FILLETS: R.02 [51]	.XXX	±0.005	[±0.127]	REFERENCE	MATERIAL
				MACHINED SURFACES: 125/3.2	.XXXX	±0.0005	[±0.0127]	THIRD ANGLE PROJECTION	SIZE B
				mm SHOWN IN [BRACKETS]			DRAWING NUMBER 028940		SHEET 1 OF 1

005010-01

VIEW FROM OUTSIDE OF MOTOR AT SWITCH END.



VOLTAGE	L1	L2	L3	JOIN & INSULATE
HIGH	T1	T2	T3	(T4,T7) (T5,T8) (T6,T9)
LOW	T1,T7	T2,T8	T3,T9	T4,T5,T6

		TOLERANCES UNLESS SPECIFIED		REGAL™ Regal Beloit America, Inc.		DRAWN RDW 04/12/02		
						CHK	APPD	
		DEC.	INCHES	TITLE EXTERNAL WIRING DIAGRAM 3 PHASE W/O PROTECTOR	SCALE 1=1		REF FIG.2-51	
		.X	±.1		MAT'L. DECAL - 004014		FMF	
		.XX	±.01		FINISH		PREV	
		.XXX	±.005		RFP 04/12/02 CAD FILE 00501001		SIZE A DRAWING NO. 005010-01	REV. A
A	UPDATED TO REGAL LOGO	SAJ	06/26/15	AJY	.XXXX	±.0005	DIST BRF-NLV	
NO.	REVISION	BY & DATE	CHK	ANG	±1/2"	DRAWING NO. 005010-01		REV. A

THIS DRAWING IN DESIGN AND DETAIL IS OUR PROPERTY AND MUST NOT BE USED EXCEPT IN CONNECTION WITH OUR WORK ALL RIGHTS OF DESIGN AND INVENTION ARE RESERVED THIS IS AN ELECTRONICALLY GENERATED DOCUMENT - DO NOT SCALE THIS PRINT

Data Sheet

Date: 19-06-2017
 Customer: _____
 Attention: _____
 Submitted by: FAREEDA DUDEKULA



145TTWD16036

Submittal

Data @ 460 V

Motor Load Data

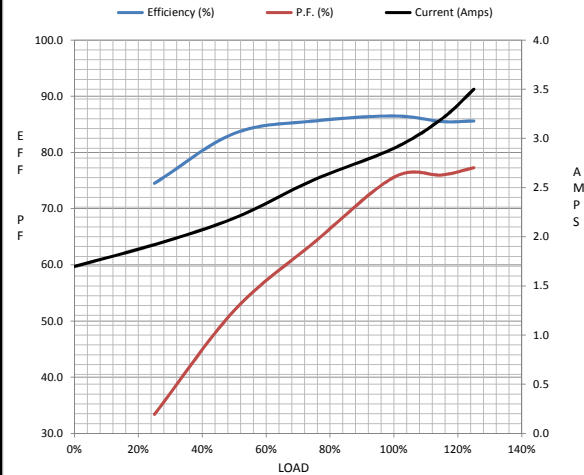
Load	0%	25%	50%	75%	100%	115%	125%	LR
Current (Amps)	1.70	1.92	2.19	2.58	2.90	3.2	3.5	26.5
Torque (ft-lb)	0.00	1.50	3.0	4.5	6.0	6.5	7.5	18.8
RPM	1800	1787	1774	1763	1751	1,730	1732	0
Efficiency (%)		74.5	83.4	85.6	86.5	85.5	85.6	
P.F. (%)	7.1	33.4	51.9	64.0	75.6	76.0	77.3	42.0

Motor Speed Data

	LR	Pull-Up	BD	Rated	Idle
Speed (RPM)	0	775	1085	1751	1800
Current (Amps)	26.5	24.4	14.2	2.90	1.70
Torque (ft-lb)	18.8	15.0	24.6	6.0	0.00

Information Block

HP	2.0			
Sync. RPM	1800			
Frame	140			
Enclosure	TEFC			
Construction	TFR			
Voltage	30/460#190/38V			
Frequency	60 Hz			
Design	A			
LR Code letter	L			
Service Factor	1.15			
Temp Rise @ FL	53 ° C			
Duty	CONT			
Ambient	40 ° C			
Elevation	1,000 feet			
Rotor/Shaft wk ²	0.16 Lb-Ft ²			
Ref Wdg	T634340 FR			
Sound Pressure @ 1M	65 dBA			
VFD Rating	CONSTANT 3:1			
Outline Dwg	028940-825			
Conn. Diag	005010.01			
Additional Specifications:				
0				
365THFS8036				
EQUIV CKT (OHMS / PHASE)				
R1	R2	X1	X2	Xm
0.0000	0.0000	0.0000	0.0000	0.0000



Speed -Torque Curve

